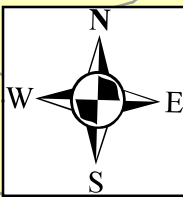
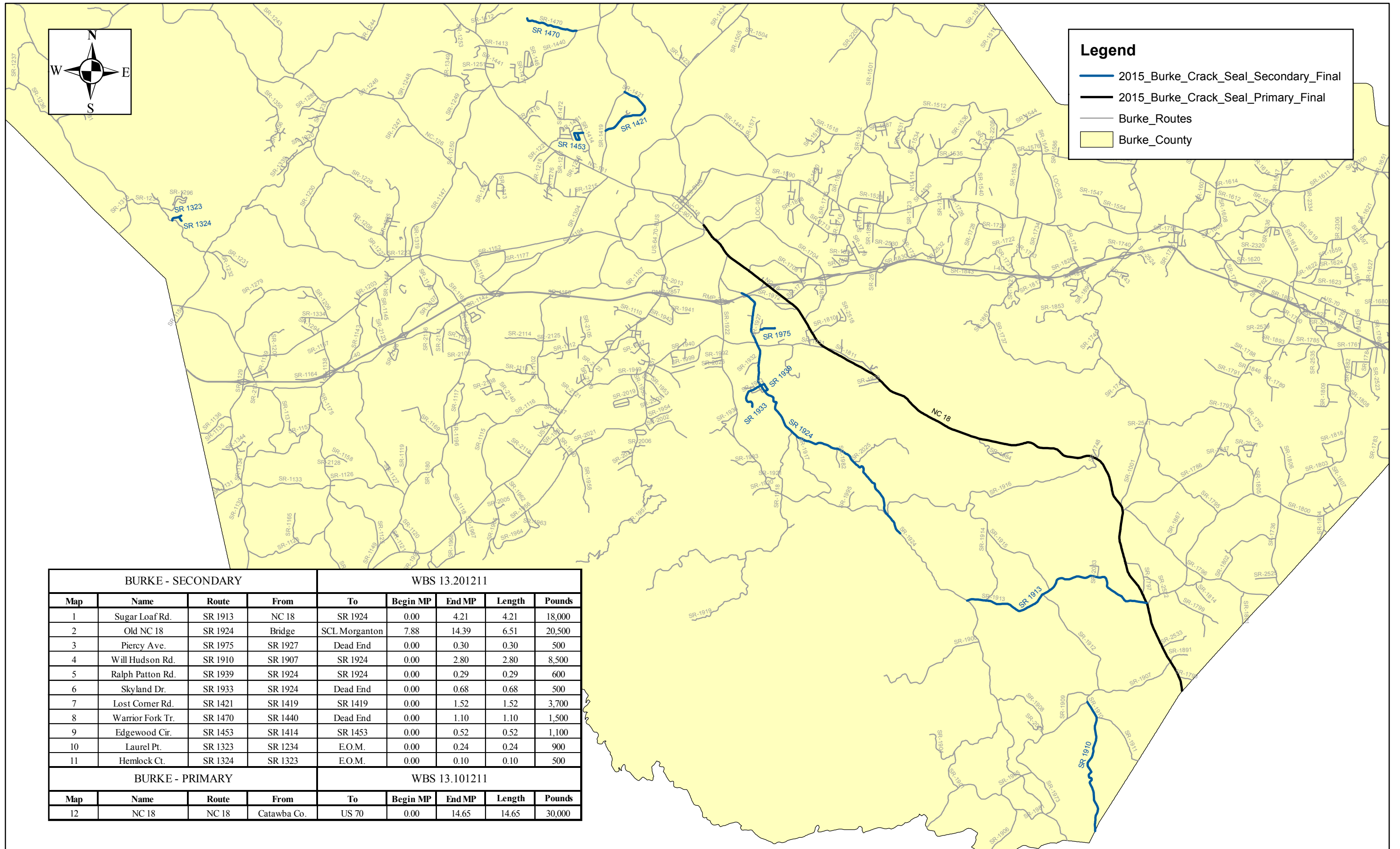


Burke Crack Seal 2015



Legend

- 2015_Burke_Crack_Seal_Secondary_Final
- 2015_Burke_Crack_Seal_Primary_Final
- Burke_Routes
- Burke_County

BURKE - SECONDARY				WBS 13.201211				
Map	Name	Route	From	To	Begin MP	End MP	Length	Pounds
1	Sugar Loaf Rd.	SR 1913	NC 18	SR 1924	0.00	4.21	4.21	18,000
2	Old NC 18	SR 1924	Bridge	SCL Morganton	7.88	14.39	6.51	20,500
3	Piercy Ave.	SR 1975	SR 1927	Dead End	0.00	0.30	0.30	500
4	Will Hudson Rd.	SR 1910	SR 1907	SR 1924	0.00	2.80	2.80	8,500
5	Ralph Patton Rd.	SR 1939	SR 1924	SR 1924	0.00	0.29	0.29	600
6	Skyland Dr.	SR 1933	SR 1924	Dead End	0.00	0.68	0.68	500
7	Lost Corner Rd.	SR 1421	SR 1419	SR 1419	0.00	1.52	1.52	3,700
8	Warrior Fork Tr.	SR 1470	SR 1440	Dead End	0.00	1.10	1.10	1,500
9	Edgewood Cir.	SR 1453	SR 1414	SR 1453	0.00	0.52	0.52	1,100
10	Laurel Pt.	SR 1323	SR 1234	E.O.M.	0.00	0.24	0.24	900
11	Hemlock Ct.	SR 1324	SR 1323	E.O.M.	0.00	0.10	0.10	500
BURKE - PRIMARY				WBS 13.101211				
Map	Name	Route	From	To	Begin MP	End MP	Length	Pounds
12	NC 18	NC 18	Catawba Co.	US 70	0.00	14.65	14.65	30,000